

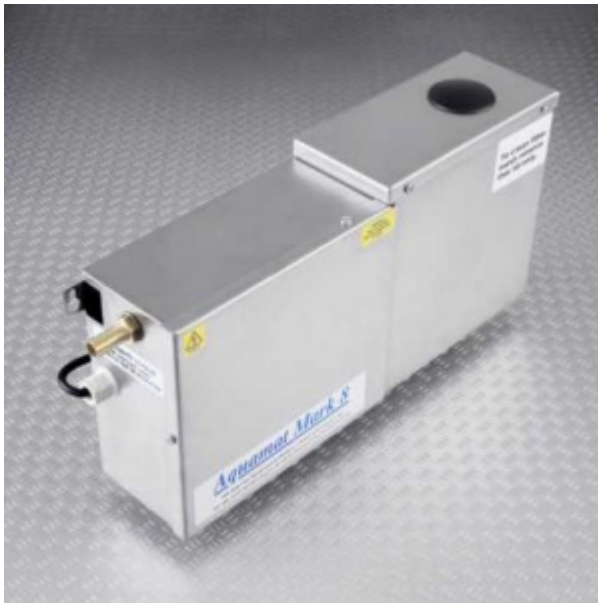
Aquamat

Condensate Removal Trays
For use under retail display cabinets

+44 (0)1274 207555

Aquamat Mark 8

230 Volt Wall Mounting Condensate Pump Tray



HEADGLOW (a division of Servicepower Ltd.)

ROSSE WORKS, MOORHEAD LANE, SHIPLEY BD18 4JH

TEL: 01274 207555 FAX: 01274 207556

www.headglow.co.uk

Aquamat Mark 8

Tank	Manufactured from 20 SWG 304 Stainless Steel.	
Dimensions	Overall	425mm x 215mm x 100mm
	Water compartment	3 litres
Access	The unit is fitted with two separate stainless steel lids, one for cleaning access (clearly marked), one for engineer service access only.	
Pump Motor	230V 50Hz, 0.8A Centrifugal pump with prime bypass.	
Max Head of Drain	12 metres	
Pump Capacity	4.2 litres/min @ 12m total head (250 litres/hour.) 8.3 litres/min @ 0m total head (500 litres/hour.)	
Inlets	1 x 1" in the side and 1 x 2" in the lid for top entry. (sealed with blind grommets in factory)	
Outlet	12mm for flexible hose	
Water Level Control	Float switch controlling power relay	
High level alarm (optional)	The unit can be supplied with an optional High Level Alarm.	
Non Return Valve	Fitted within control compartment	
Electrical Supply	230 Volt AC, 50Hz mains supply required The unit is fitted with a mains plug (fused 5 Amp) And 2 metres of mains cable.	
Approvals	The unit is certified by an independent test house to comply with the Low Voltage and EMC directives and is therefore CE compliant.	

Installation

The unit should be situated on a vertical surface with attention given to the positioning of the unit and the connecting flexible hoses to ensure that the hoses are not kinked and the unit can be easily accessed for cleaning / maintenance.

Care should be taken not to obstruct the float arm or block the pump inlet.

The water outlet should not be reduced to less 12 mm.

The pump is self-priming, on initial switch on the first prime may take up to 30 seconds.

Aquamat Mark 8

Maintenance & Servicing

The *Aquamat Mark 8* is a very reliable unit, which provides excellent service, but is also easily maintained and serviced with the minimum of engineering knowledge.

The only maintenance required is periodic cleaning of the tank and filtering grill, the frequency of this maintenance is determined by local conditions. Failure to clean the unit correctly will result in reduced service life and may invalidate the warranty.

The pump tray must not be cleaned with concentrated bleach or other aggressive cleaning agents. If such cleaning agents are used they must be pre-diluted, always flush the system through with several litres of water after cleaning to prevent possible corrosion damage.

Note: Failure of the unit is usually attributable to a build-up of debris within the pump tray or kinks/blockages in the pipe work.

Troubleshooting

WARNING: DO NOT RUN THE PUMP DRY AS THIS WILL CAUSE DAMAGE

PROBLEM		ACTION
Pump fails to operate on rising water level	1	Disconnect the unit from electrical supply.
CAUSE		
Debris preventing float switch movement	2	Check that the float arm on the switch is not jammed
CAUSE		
Loose connection	3	Check the terminal block connections
CAUSE		
Float switch failure	4	Check float switch closes contact when raised to horizontal position.
CAUSE		
Motor burnt out. (Running dry.)	5	Check pump motor and replace if necessary.

PROBLEM		ACTION
If the tray fails to stop operating.	1	Disconnect the unit from electrical supply.
CAUSE		
Debris preventing float switch movement	2	Check that the float arm on the switch is not jammed.

PROBLEM		ACTION
If the motor 'short cycles' i.e. stops and starts every 30 seconds	1	Disconnect the unit from the electrical supply
CAUSE		
Debris preventing float switch movement	2	Check that the Non-return valve is clear.

Aquamat Mark 8

Warranty

All units undergo a thorough testing procedure prior to leaving the works.
A 12 Month Warranty is provided, subject to correct maintenance procedure.

Spares

Spare / Replacement Parts

Code	Description
AM108	Complete <i>Aquamat Mark 8</i>, Pump Tray
AM108A	Complete <i>Aquamat Mark 8</i>, Pump Tray (c/w High Level Alarm)
AM111	230 Volt Pump Motor
AM123	Non-Return Valve
AM127	Jubilee Clip (Modified)
AM128	Plastic Tank Connector
AM139	Plastic Float Switch
AM143	PCB (complete with Pump Relay only)
AM241	Brass Elbow

All spares are normally available ex-stock for next day delivery if ordered by 4pm.

For prices and ordering, please call the Sales Department on 01274 207555

Aquamat

By

HEADGLOW

Tel: 01274 207555

Fax: 01274 207556

Servicepower Ltd. T/A Headglow
Rosse Works, Moorhead Lane, Shipley BD18 4JH